

LIFE BUILDING

Offices per standard floor

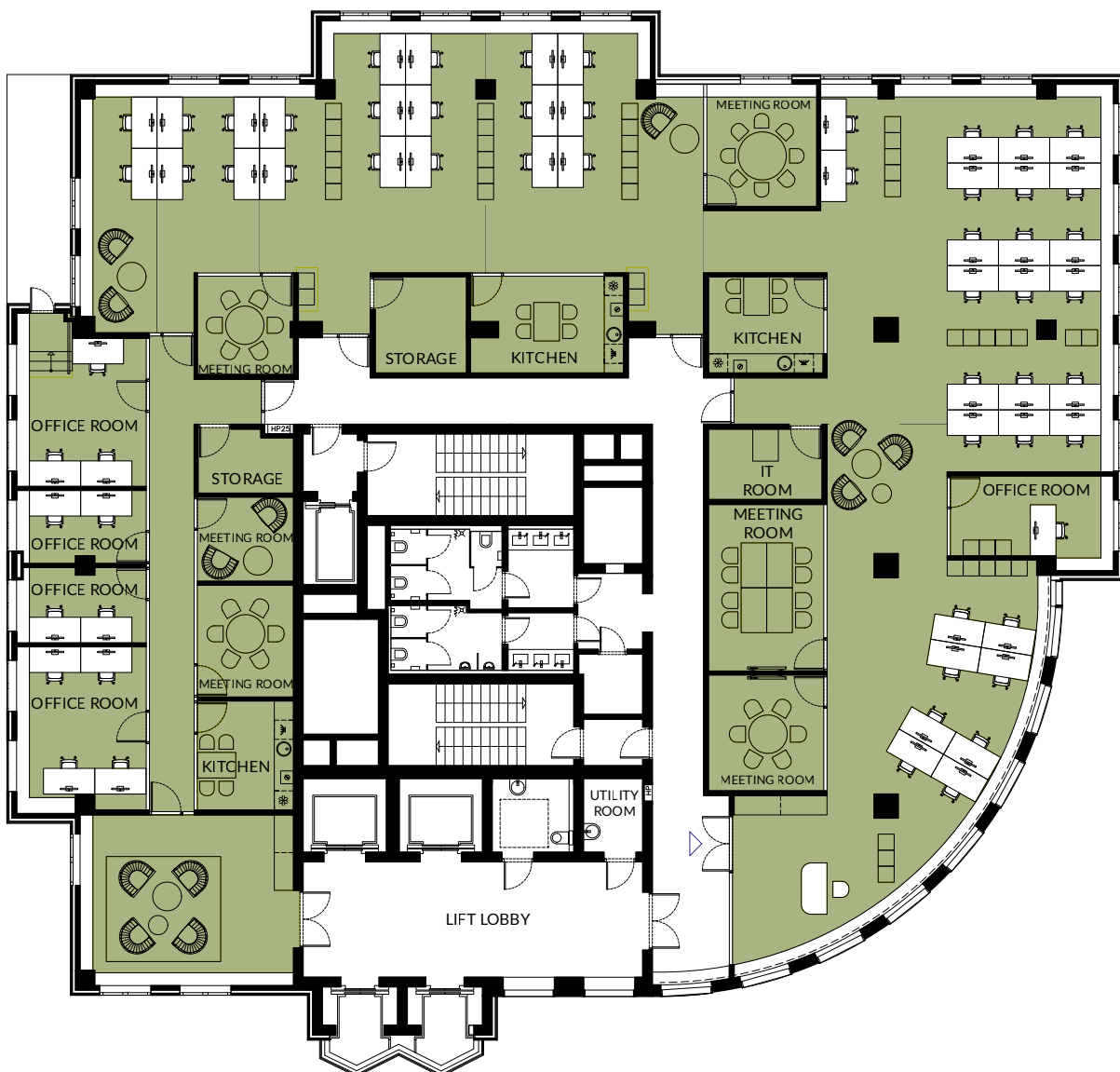
Each floor can be divided according to your needs: 1 unit (single tenant) | 2 units | 3 units

FLOORPLAN OPTION 01

OFFICE PER FLOOR 630m²



61 WORKPLACES | 630m²



LIFE_building Warsaw Al. Jana Pawła II 25 Warsaw